

CUMBERLAND

Rhythmic Forms for Infinite Modularity

Isla Double

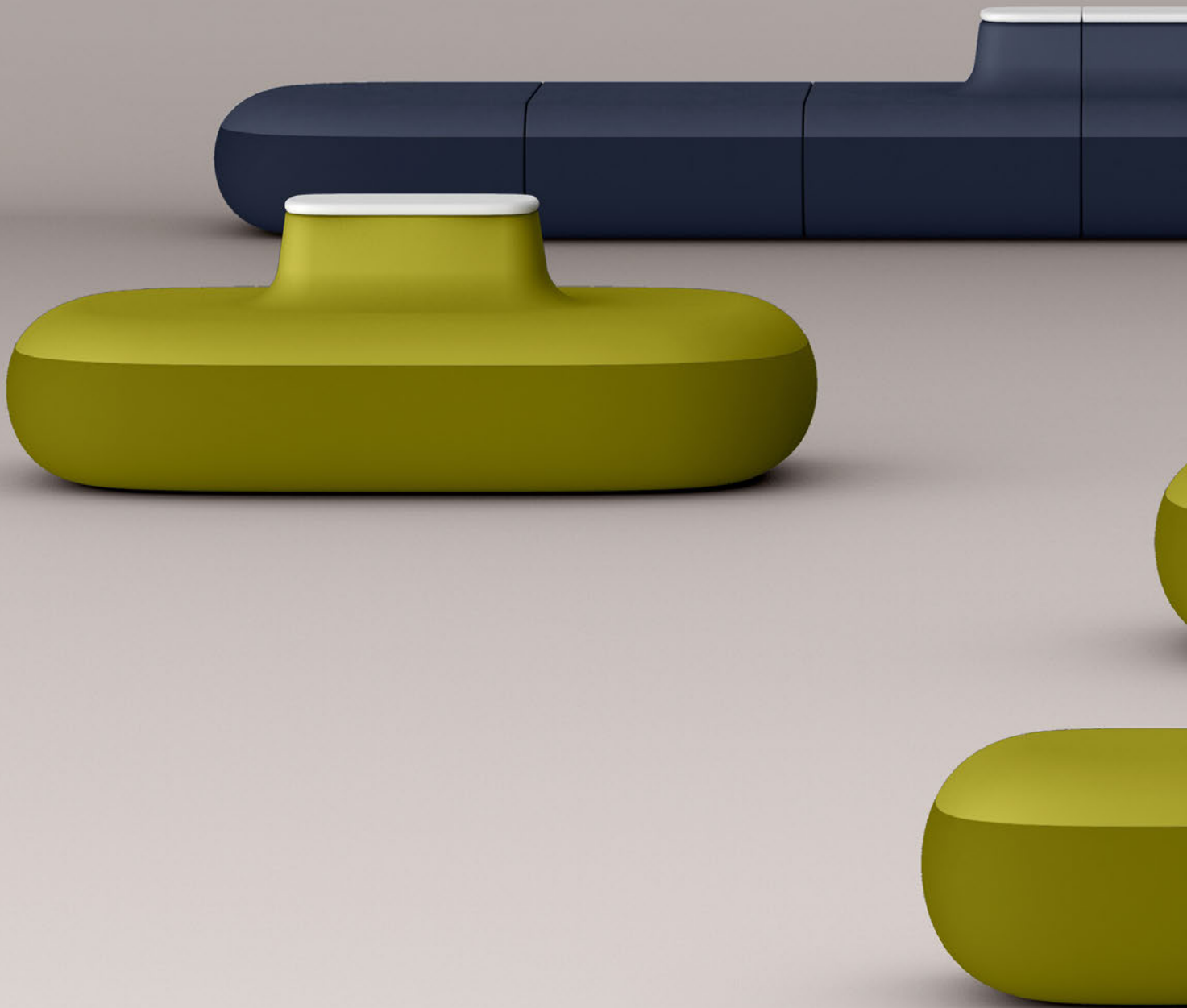


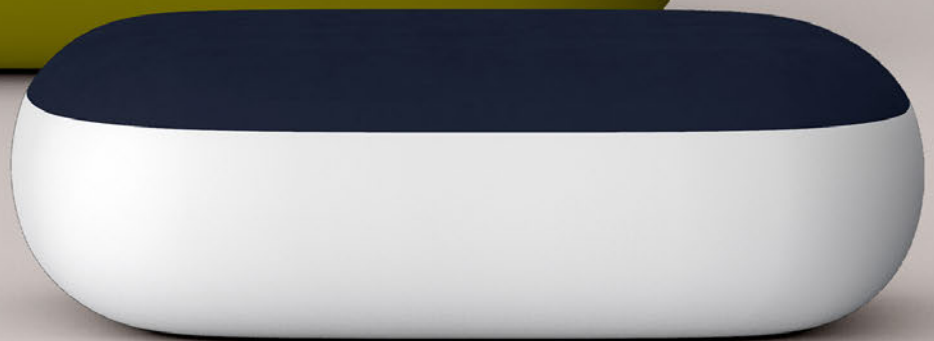
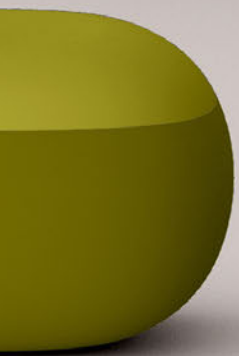
beautiful objects that work effortlessly together — anywhere

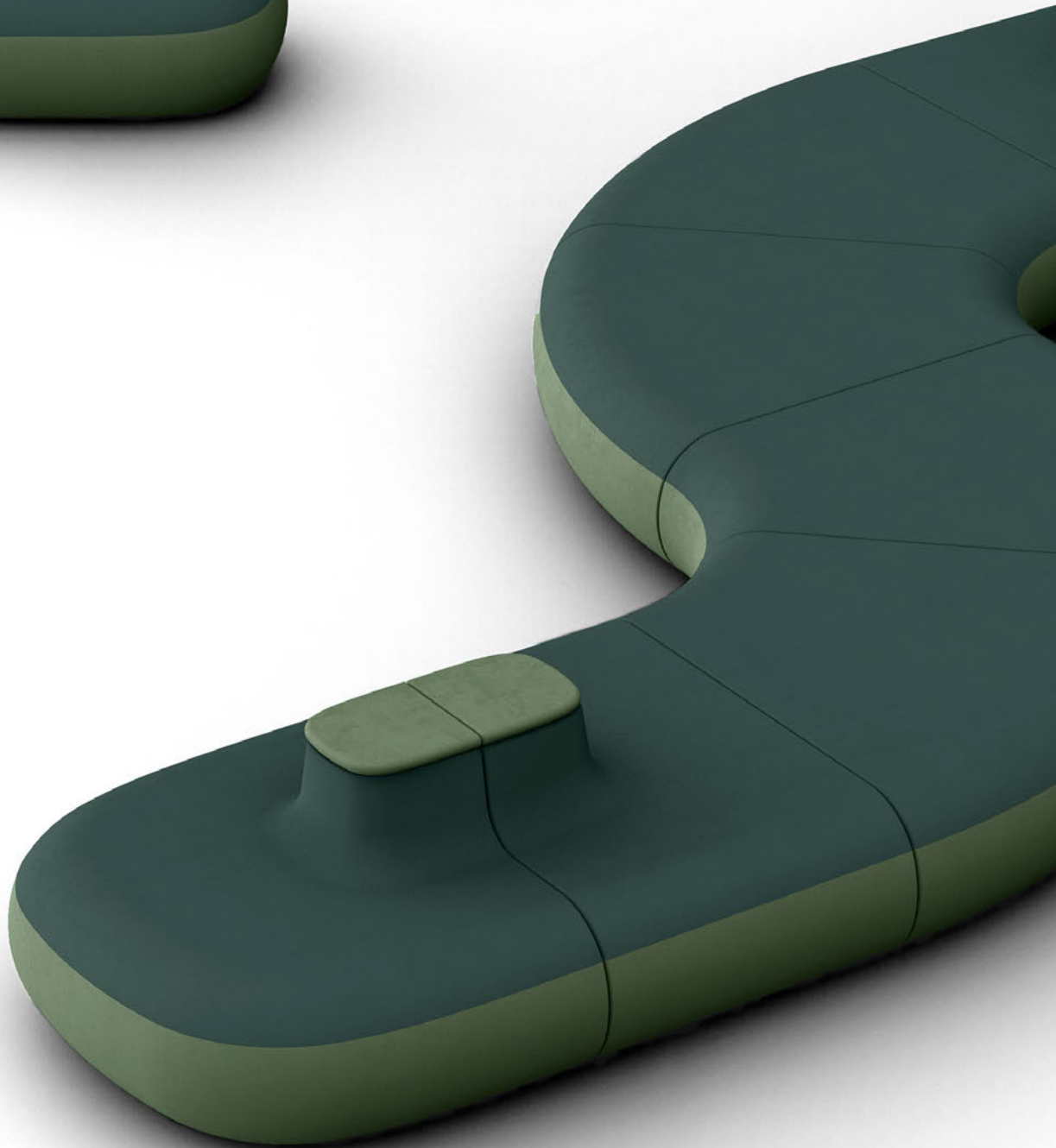
Isla Double

*Designed by Defne Koz +
Marco Susani*

For Defne Koz and Marco Susani, the process of design always begins with an understanding of people, and how their behavior and lifestyle evolve over time. For Isla, that inspiration came from observing the changing nature of work—its transition from occurring only in formal, rigidly defined spaces to activities that have now become more free-form and fluid. “There’s a shift towards more informal collaboration and the coalescence between work and socialization,” Susani notes. “Isla was designed to play out the friction and balance between life and work. It evokes the familiar yet is not conventional.”

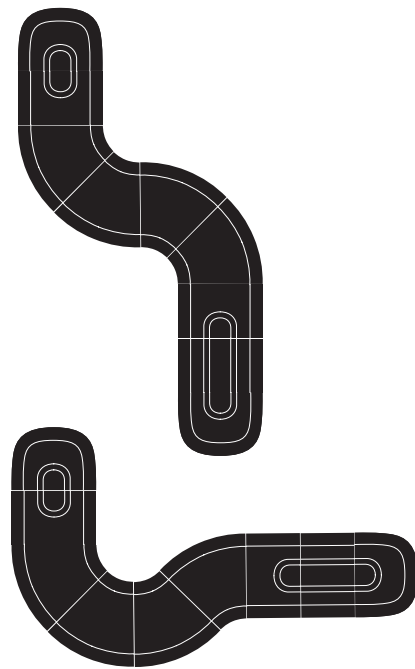






Offering an innovative approach to modular seating, Isla allows for both linear, orthogonal layouts and free-flow configurations—making it the ideal solution for multi-functional, fluid-use architectures. “The design achieves an ‘informal sophistication,’” says Koz. “We wanted to incorporate the inviting warmth and softness typically associated with a domicile but design the furniture to support a work point of view.” This involved a focus on finding the right shapes and configurations to create more functionality and flexibility.

The result is a design that has broad application for work, hospitality, higher education, healthcare, and other public spaces.



Ease of Configuration

Interchangeable sections allow for easy expansion or reconfiguration of layouts, offering ultimate flexibility to respond to evolving needs.

Isla Double

Designed by Defne Koz +
Marco Susani

Isla offers inviting comfort and infinite modularity for informal settings and fluid spaces. Encouraging frequent change in position rather than enforcing a single posture, Isla seating can work to fill or divide space, and direct flow and movement between spaces. The Isla Double's concise vocabulary of modular sections can be interchangeably combined to create dynamic and flowing layouts, ranging from expressive half-round configurations to arrangements featuring relaxed and subtle curves.



Easily transition from lounge to benching within the same flexible configuration.

Rigid back and top offer a practical surface while establishing division and distance for users. Optional power is easily accessed from the top cap surface.

Specifications

The Isla Double vocabulary is comprised of five backed-seating sections and four bench-seating components available in a Modular End, Straight Section, Bench-to-Lounge Transition, and two types of curved elements – a Compact 45° Curve and a Gentle 22.5° Curve. Seat is 4" thick multi-density polyurethane foam over a plywood frame. Each backed-seating component has a short 10"-high backrest.

Options

Upholstery: COM/COL, Graded Fabric, and Elmo Leather Program. Each section can utilize up to three fabrics; lower base, seat/back rest, and top cap.

Model	Description	Dimensions
2840	Bench / End	36"w x 51"d x 17"h
2841	Bench / Straight	33"w x 51"d x 17"h
2842	Bench / 22.5° Angle	49/29"w x 51"d x 17"h
2843	Bench / 45° Angle	56/17"w x 51"d x 17"h
2845	Lounge / Transition	33"w x 51"d x 27/17"h
2846	Lounge / End	36"w x 51"d x 27"h
2847	Lounge / Straight	33"w x 51"d x 27"h
2848	Lounge / 22.5° Angle	49/29"w x 51"d x 27"h
2849	Lounge / 45° Angle	56/17"w x 51"d x 27"h

